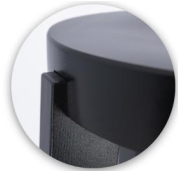
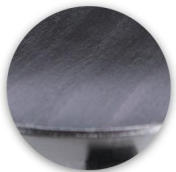




BAR STOOL **BENO**



Stabiles, vollmassives Hartholzgestell /
Sturdy, solid hardwood frame /
Structure stable en bois dur massif



Pflegeleichte, lackierte Oberfläche /
Easy-care, lacquered surface /
Surface laquée facile d'entretien



Hohe Widerstandsfähigkeit durch Fußring aus Stahl /
High resistance thanks to steel foot ring /
Haute résistance grâce à l'anneau de base en acier



The BENO bar stool is a clean, robust hospitality all-rounder made of solid beech wood, finished in black lacquer. The round seat and elegantly tapered legs give it a minimalist, high-quality appearance that integrates easily into any interior concept. The footrest ring, available in stainless steel or black powder-coated steel, ensures comfort and stability. Those who prefer a softer seat can add a felt pad or upholstered seat and adapt BENO precisely to the desired look and application. A wide range of upholstery options is available in numerous materials and colors. This makes BENO a clean, durable solution for bars, restaurants, and hotels, whether as a wooden seat or as part of an upholstered seating concept.

- Solid beech wood, black lacquered: robust, durable, and made for the demanding realities of everyday hospitality use
- Footrest ring of your choice: highly resistant – stainless steel or black powder-coated steel
- Flexible seating options: pure wood or with felt pad/upholstered seat and a wide range of upholstery choices

\$228.00

BAR STOOL BENO

Your chosen variant

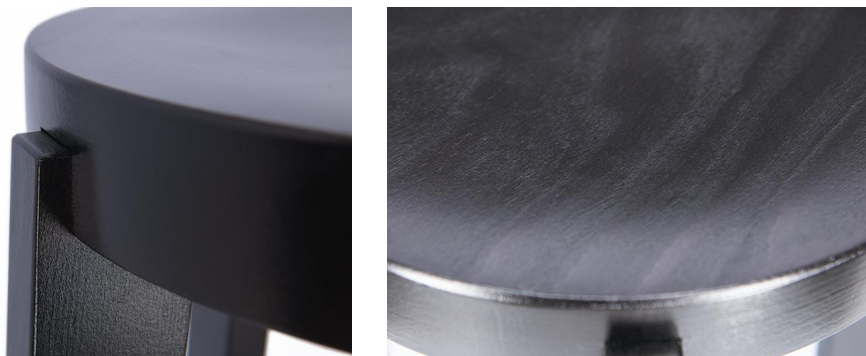
Product details

Product Code:	102BJB
Model name:	Beno
Product type:	bar stool
Frame material:	beech
Frame colour:	black stained and varnished
Foot colour:	matt brushed
Assembly state:	partially assembled

Technical specifications

Product Code:	102BJB
Model name:	Beno
Product type:	bar stool
Application area:	indoors
Seat height:	80 cm
Seat width:	38 cm
Seat depth:	38 cm
Weight:	5.9 kg

BAR STOOL **BENO**



BAR STOOL BENO